



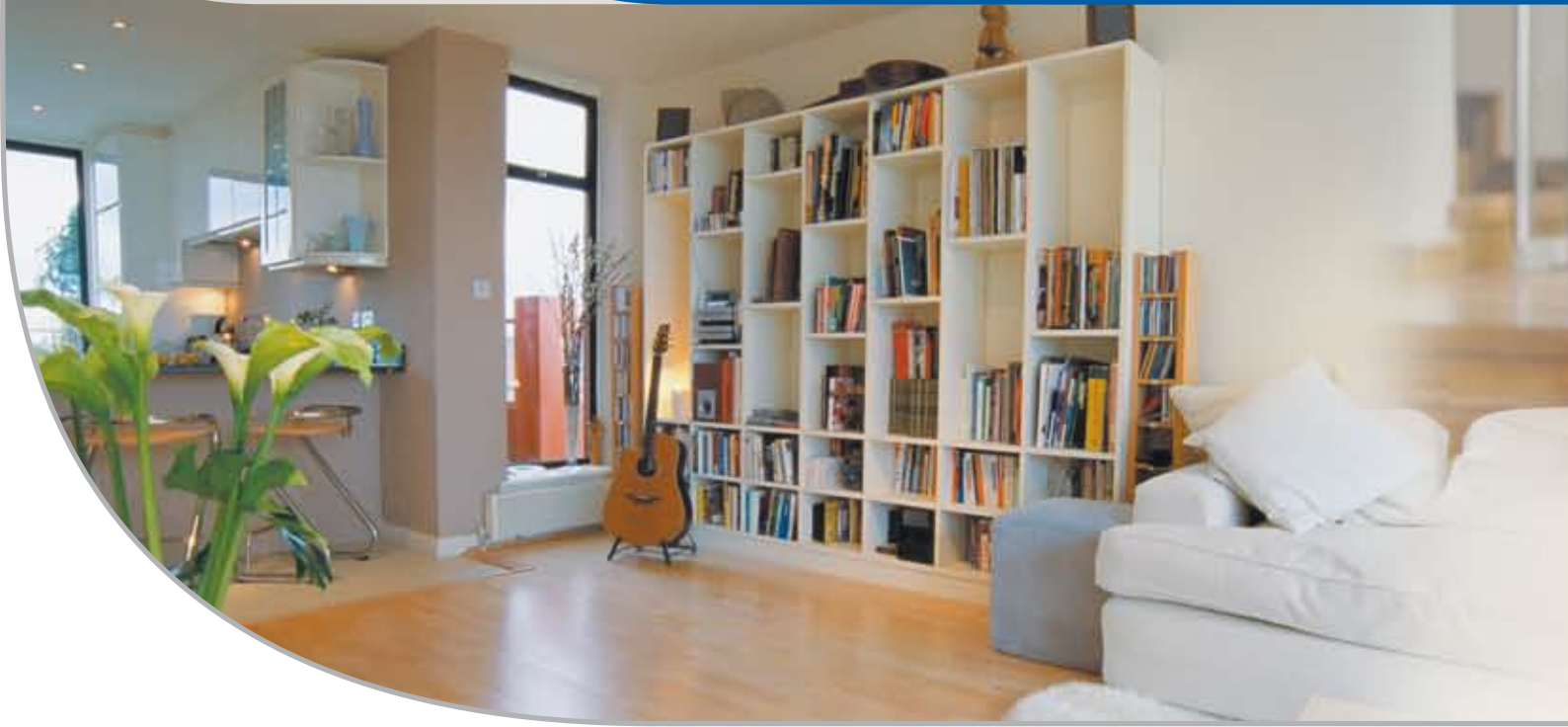
Multisplit solutions

**XPOWER**  
INVERTER

TOTAL COMFORT AT HOME



THE ART OF AIR CONDITIONING.



### MULTISPLIT: THE RIGHT SOLUTION AT HOME

THE COMPLETE SOLUTION FOR OPTIMAL COMFORT AND WISE ENERGY CONSUMPTION FOR A VILLA OR AN APARTMENT.

A SINGLE OUTDOOR UNIT THAT DRIVES AND OPERATES UP TO 4 DIFFERENT INDOOR UNITS TO PROVIDE OPTIMAL COOLING, HEATING OR BOTH.



## Multiply your comfort!



Carrier multisplit family provides a wide range of choice for both indoor units, types and sizes, and condensing units to deliver the optimal solution to every application requirement.



The indoor units are silent and elegant, granting absolute comfort without any disturbance.



Each member of your family can choose which unit wants to install in his room because Carrier offers many combinations for any kind of flavour!



**XPOWER** IS THE NATURAL CHOICE TO ACHIEVE THE MAXIMUM LEVEL OF WELL-BEING. THANKS TO ITS DC BLENDED INVERTER TECHNOLOGY, THE OPTIMAL COMFORT LEVEL IS ALWAYS MAINTAINED INDEPENDENTLY IN EVERY ROOM.



Wide range of indoor units and combinations, to suit both practical and aesthetic requirements.



High saving: low energy consumption means low energy bills.



Compact outdoor unit: its reduced dimensions make this unit very competitive; it is easy to install and totally unobtrusive.



R410A refrigerant: high performance and maximum efficiency.



Certificated performances: the product performances published by Carrier are certified by Eurovent, the most important independent European certification for air conditioning system.



## A wide choice of well-being

When it is necessary to air condition two, three or four rooms, the line-up of Carrier's multi-split systems is the perfect solution for every requirement. In fact, Carrier has enriched its Multisplit range to create all the comfort you desire.



2 rooms



3 rooms



4 rooms

The wide range of indoor units can satisfy every need:

HIGH-WALL



CONSOLE



SATELLITE



CASSETTE



Unique: DIAMOND



## DC BLENDED INVERTER TECHNOLOGY

The XPower systems are equipped with twin-rotary compressors and are electronically controlled by two precise control systems that ensure high comfort and low operating noise with maximum energy saving:

- PAM (Pulse Amplitude Modulation) generates maximum power at start-up.
- PWM (Pulse Width Modulation) optimises the efficiency once the ideal temperature has been reached, reducing energy consumption and temperature fluctuation.





**Compact outdoor units**

The different indoor units need just one condensing unit to operate: this is a perfect solution, when outdoor space is limited. In addition, the outdoor unit range is very complete to meet the most demanding requirements. Carrier offers extremely compact condensing units that can be easily installed, without any bother.

**Unique advanced features:**

Self diagnosis system: with 40 different check codes, the diagnostic process is precise and effective.

Electronic modulation valves regulate the refrigerant flow and optimise the cooling temperature in the refrigerant circuit.

Twin rotary cylinders.

Advanced electronic management.

Chargeless: the refrigerant charge is suitable for any combination; no additional charge is needed, making installation simpler and faster.



**70 m**

**Long pipe length for an easier installation**

Carrier XPower Multisplit are designed to connect up to four indoor units in different areas.

The pipe can reach up to 15 m in height and 70 m in length, making the installation simpler and quicker.

**40SQM**

#### SATELLITE

Optimal comfort, it can be installed in the false ceiling of a corridor or bathroom so to limit noise level in the rooms.

- Quick and easy to install: the preferred solution for consultants and installers.
- Slim profile, the low unit height permits installation even with low ceilings; its compactness and lightweight make this unit very competitive.
- Filters, coils, motors and valves are easily accessible by removing only a few screws.

**42VQM**

#### CONSOLE

The optimal choice for a living room with its pleasant aesthetics or for a bedroom for optimal air flow distribution and no direct hit on the occupants of the room. It's slim and stylish and designed for wall or under the ceiling mounting.

- Equipped with titanium photo-catalytic filters that remove odours and impurities up to 0,01 mm.
- Its compact dimensions make possible a wide range of applications, even under a window sill. The Italian Association of Industrial Design (ADI) has recognised it with a design award.
- All the key components are easily accessible through the grille without removing the front panel.

**40KQM**

#### CASSETTE

This compact and unobtrusive XPower cassette offers the right combination of performance, style and flexibility.

- Equipped with titanium photo-catalytic filters that remove odours and impurities up to 0,01 mm, and high efficiency electrostatic filters.
- Modern and compact design, awarded by the Italian Association of Industrial Design (ADI).
- All the critical components are accessible simply by opening the grille.



**HIGH-WALL**

The elegant and stylish Sensation high wall provides optimum comfort, improved air quality and high energy saving.

- Pure, clean and ionised air: the Air4Life system uses photo-catalytic filters to make the air healthier and cleaner.
- Compact and stylish design with modern flat panel.
- The original ergonomic MyComfort remote control allows easy control of all the functions.



*Sensation*

**42PQM**

**HIGH-WALL**

**The amazing innovation in Carrier's residential range: beautiful to look at.**

This is the most revolutionary air conditioner you could imagine! It's vertical and with its very pleasing aesthetic look it can be installed in any ambient.

- Ease of installation: it can be installed in a wall or in a corner, it is easy to find the right place for nice décor and optimal comfort.
- Excellent indoor air quality and optimized air distribution, thanks to the large and advanced filtration system, the opening front panel and the two vertical fans.
- Coloured well-being: wide choice of easily changeable coloured panels to adapt to any interior décor (panels: ivory, coral, artichoke blue, aluminium).



**Diamond**

**42ADF**



**LOCAL INFRA-RED**



**MAIN FUNCTIONS:** The basic and most used buttons are ergonomically placed for intuitive and user friendly operations.



**MY COMFORT:** Allows selection and memorization of the favourite end-user setting via the remote control. (Not included in Diamond control).



**LOUVRE CONTROL:** Air flow direction can be remotely adjusted to optimized the air flow distribution and suit individual preferences.



**PROGRAMMING FUNCTION:** Real time clock, easy selection of start and stop time, sleep mode and continuous programming.



**IONIZER:** The ionizer can be operated separately, to deliver millions of negative ions in the ambient and give an immediate sensation of well-being. (Included only in Sensation, 42PQM, control).

**LOCAL WIRED**



This small and elegant wall mounted control serves up to 6 units with the same operating setting.

**LIQUID CRYSTAL DISPLAY:** All settings and operation parameters clearly displayed.

**EASY MODE AND FAN SELECTION BUTTON:** Quick choice between cooling, heating, dehumidification, fan only or auto.

**GROUPING FUNCTIONALITY:** This control is suitable to operate up to 6 units located in the same zone.

Model		38VYM-14N	38VYM-18N	38VYM-28N	38VYM-32N
N. of compressors		1	1	1	1
Compressor type		Twin rotary	Twin rotary	Twin rotary	Twin rotary
Refrigerant charge	g	900	1150	2400	2400
Maximum pipe length per unit	m	20	20	25	25
Minimum pipe length per unit	m	2	2	2	2
Maximum height difference	m	10	10	15	15
Total pipe length	m	30	30	50	70
Total chargeless pipe length	m	30	30	50	70
Min. no. of connected indoor units		2	2	2	2
Sound pressure (cooling mode)	dB(A)[2]	43	43	48	48
Sound power (cooling mode)	dB(A)	63	63	68	68
Sound pressure (heating mode)	dB(A)[2]	44	44	48	48
Sound power (heating mode)	dB(A)	64	64	68	68
Air flow (min./nominal/max.)	l/s	344/539/656	344/539/656	383/656/689	383/656/689
Dimensions (h x l x d)	mm	590 x 800 x 300	590 x 800 x 300	800 x 800 x 300	800 x 800 x 300
Weight	kg	46	50	65	65
Flare connections	n° x (in)[3]	2 x (1/4") - 2 x (3/8")	2 x (1/4") - 2 x (3/8")	3 x (1/4") - 3 x (3/8")	4 x (1/4") - 4 x (3/8")
Maximum running current	A[3]	11,5	11,5	14,2	14,2
Power supply	V-ph-Hz	230-1-50	230-1-50	230-1-50	230-1-50
		220-1-60	220-1-60	220-1-60	220-1-60



Model		38VGM-14N	38VGM-18N	38VGM-28N	38VGM-32N
N. of compressors		1	1	1	1
Compressor type		Twin rotary	Twin rotary	Twin rotary	Twin rotary
Refrigerant charge	g	900	1150	2400	2400
Maximum pipe length per unit	m	20	20	25	25
Minimum pipe length per unit	m	2	2	2	2
Maximum height difference	m	10	10	15	15
Total pipe length	m	30	30	50	70
Total chargeless pipe length	m	30	30	50	70
Min. no. of connected indoor units		2	2	2	2
Sound pressure (cooling mode)	dB(A)[2]	43	43	48	48
Sound power (cooling mode)	dB(A)	63	63	68	68
Sound pressure (heating mode)	dB(A)[2]	not applicable	not applicable	not applicable	not applicable
Sound power (heating mode)	dB(A)	not applicable	not applicable	not applicable	not applicable
Air flow (min./nominal/max.)	l/s	344/539/656	344/539/656	383/656/689	383/656/689
Dimensions (h x l x d)	mm	590 x 800 x 300	590 x 800 x 300	800 x 800 x 300	800 x 800 x 300
Weight	kg	46	50	65	65
Flare connections	n° x (in)[3]	2 x (1/4") - 2 x (3/8")	2 x (1/4") - 2 x (3/8")	3 x (1/4") - 3 x (3/8")	4 x (1/4") - 4 x (3/8")
Maximum running current	A[3]	11,5	11,5	14,2	14,2
Power supply	V-ph-Hz	230-1-50	230-1-50	230-1-50	230-1-50
		220-1-60	220-1-60	220-1-60	220-1-60

[1] Sound pressure level in emispheric field at 4 m

[2] Connecting pipes for PQM015 and SQM015 must be 1/4" - 1/2"

Flare adapter to be mounted on outdoor unit will be supplied together with indoor unit

[3] Variable speed compressor can reduce this value during operation

## COMPATIBILITY CHART

Outdoor unit	Heat Pump / Cooling only														
	Indoor Unit														
	Hi-Wall 42PQM				Diamond 42ADF		Console/Underceiling 42VQM			Satellite (Ducted) 40SQM			Cassette 40KQM		
	7	9	12	15	25	35	9	12	15	9	12	15	12	15	
38VYM-14N / 38VGM-14N	•	•	•		•	•	•	•			•	•			
38VYM-18N / 38VGM-18N	•	•	•	•	•	•	•	•	•	•	•	•	•	•	
38VYM-28N / 38VGM-28N	•	•	•	•	•	•	•	•	•	•	•	•	•	•	
38VYM-32N / 38VGM-28N	•	•	•	•	•	•	•	•	•	•	•	•	•	•	

In matchability table please consider size 25 = 9 and size 35 = 12



### 40SQM Inverter Multi Satellite

Indoor unit		40SQM009	40SQM012	40SQM015
Dehumidification	l/h	0,5	0,8	1
Air flow (low/med/high)	l/s	92/103/133	103/118/139	103/118/139
Sound pressure (low/med/high)	dB(A)[1]	42/43/44	42/44/45	42/44/45
Sound power (low/med/high)	dB(A)	55/56/57	56/57/58	56/57/59
Dimensions (h x l x d)	mm	220 x 725 x 555	220 x 725 x 555	220 x 725 x 555
Weight	kg	23	23	23
Flare connections	in	1/4" - 3/8"	1/4" - 3/8"	1/4" - 1/2"
Power supply	V-ph-Hz	230-1-50	230-1-50	230-1-50
		220-1-60	220-1-60	220-1-60

[1] Sound pressure level in a free field according to JIS9612 Standard



## 42VQM Inverter Multi Console/Underceiling

Indoor unit		42VQM009	42VQM012	42VQM015
Dehumidification	l/h	1,2	1,5	1,7
Air flow (low/med/high)	l/s	78/88/100	109/118/126	109/118/126
Sound pressure (low/med/high)	dB(A)[1]	34/36/39	39/41/43	39/41/43
Sound power (low/med/high)	dB(A)	45/47/50	50/52/54	50/52/54
Dimensions (h × l × d)	mm	540 × 850 × 200	540 × 850 × 200	540 × 850 × 200
Weight	kg	15	16	18
Flare connections	in	1/4" – 3/8"	1/4" – 3/8"	1/4" – 1/2"
Power supply	V-ph-Hz	230-1-50	230-1-50	230-1-50
		220-1-60	220-1-60	220-1-60

[1] Sound pressure level in a free field according to JIS9612 Standard



## 40KQM Inverter Multi Cassette

Indoor unit		40KQM012	40KQM015
Dehumidification	l/h	0,8	1,0
Air flow (low/med/high)	l/s	154/163/175	154/169/184
Sound pressure (low/med/high)	dB(A)[1]	34/36/37	34/37/39
Sound power (low/med/high)	dB(A)	47/49/50	47/50/52
Dimensions (h × l × d)	mm	298/575/575	298/575/575
Weight	kg	17,5	19,0
Grille dimensions (h × l × d)	mm	30/720/720	30/720/720
Grille weight	kg	2,5	2,5
Flare connections	in	1/4" – 3/8"	1/4" – 1/2"
Power supply	V-ph-Hz	230-1-50	230-1-50
		220-1-60	220-1-60

[1] Sound pressure level in a free field according to JIS9612 Standard


**42PQM\_S Inverter Multi Hi-Wall**

Indoor unit		42PQM007S	42PQM009S	42PQM012S	42PQM015S
Dehumidification	l/h	1,0	1,0	1,2	1,4
Air flow (low/med/high)	l/s	94/101/115	116/132/154	125/143/165	150/168/187
Sound pressure (low/med/high)	dB(A)[1]	35/38/41	35/38/41	36/39/42	39/43/44
Sound power (low/med/high)	dB(A)	46/49/52	46/49/52	47/50/53	52/56/57
Dimensions (h x l x d)	mm	260 x 790 x 196	260 x 790 x 197	260 x 790 x 198	260 x 790 x 199
Weight	kg	8,5	8,5	8,5	8,5
Flare connections	in	1/4" – 3/8"	1/4" – 3/8"	1/4" – 3/8"	1/4" – 1/2"
Power supply	V-ph-Hz	230-1-50	230-1-50	230-1-50	230-1-50
		220-1-60	220-1-60	220-1-60	220-1-60

[1] Sound pressure level in a free field according to JIS9612 Standard


**42ADF Inverter Multi ADF**

Indoor unit		42ADF025M	42ADF035M
Dehumidification	l/h	1,1	1,3
Air flow (low/med/high)	l/s	92/108/124	101/116/132
Sound pressure (low/med/high)	dB(A)[1]	33/37/39	35/38/41
Sound power (low/med/high)	dB(A)	47/51/53	49/52/54
Dimensions (h x l x d)	mm	820 x 390 x 185	820 x 390 x 185
Weight	kg	14,6	14,6
Flare connections	in	1/4" – 3/8"	1/4" – 3/8"
Power supply	V-ph-Hz	230-1-50	230-1-50
		220-1-60	220-1-60

[1] Sound pressure level in a free field according to JIS9612 Standard

38VGM\_N/VYM\_N (DUAL SPLIT)

Cooling mode (size 14)													
Indoor unit		Cooling Capacity (kW)						Input Power (W)			EER	Energy Class	AEC
size	Total	Min	Max	IU #1	IU #2	IU #3	IU #4	Total	Min	Max	W/W		kW/h
7	2,31	1,10	3,00	2,31	-	-	-	610	290	1060	3,79	A	305
9	2,48	1,10	3,40	2,48	-	-	-	680	290	1100	3,65	A	340
12	2,62	1,10	3,40	2,62	-	-	-	780	290	1300	3,36	A	390
7+7	3,76	1,40	5,20	1,88	1,88	-	-	1160	250	1960	3,24	A	580
7+9	3,80	1,40	5,20	1,66	2,14	-	-	1170	250	1980	3,25	A	585
7+12	3,85	1,40	5,40	1,42	2,43	-	-	1180	250	2000	3,26	A	590
9+9	3,90	1,40	5,40	1,95	1,95	-	-	1190	250	2000	3,28	A	595
9+12	3,95	1,40	5,60	1,69	2,26	-	-	1210	250	2040	3,26	A	605

Cooling mode (size18)													
Indoor unit		Cooling Capacity (kW)						Input Power (W)			EER	Energy Class	AEC
size	Total	Min	Max	IU #1	IU #2	IU #3	IU #4	Total	Min	Max	W/W		kW/h
7	2,60	1,10	3,21	2,60	-	-	-	760	290	1060	3,42	A	380
9	2,98	1,10	3,40	2,98	-	-	-	900	290	1060	3,31	A	450
12	3,46	1,10	3,80	3,46	-	-	-	1150	290	1300	3,01	B	575
15	3,87	1,10	4,00	3,87	-	-	-	1350	290	1380	2,87	C	675
7+7	4,90	1,40	5,60	2,45	2,45	-	-	1625	250	2040	3,02	B	813
7+9	4,95	1,40	5,60	2,17	2,78	-	-	1630	250	2040	3,04	B	815
7+12	5,00	1,40	5,60	1,77	3,23	-	-	1650	250	2040	3,03	B	825
7+15	5,05	1,40	5,60	1,61	3,44	-	-	1680	250	2040	3,01	B	840
9+9	5,08	1,40	5,60	2,54	2,54	-	-	1690	250	2040	3,01	B	845
9+12	5,09	1,40	5,60	3,05	2,04	-	-	1680	250	2040	3,03	B	840
12+12	5,12	1,40	5,60	2,56	2,56	-	-	1690	250	2040	3,03	B	845
9+15	5,15	1,40	5,60	1,93	3,22	-	-	1710	250	2040	3,01	B	855



38VGM\_N/VYM\_N (TRI SPLIT)

Cooling mode (size 28)													
Indoor unit		Cooling Capacity (kW)						Input Power (W)			EER	Energy Class	AEC
size	Total	Min	Max	IU #1	IU #2	IU #3	IU #4	Total	Min	Max	W/W		kW/h
7	2,40	1,10	3,21	2,47	-	-	-	740	400	1060	3,24	A	370
9	2,47	1,20	2,90	2,45	-	-	-	745	400	1100	3,32	A	373
12	3,21	1,20	3,80	3,21	-	-	-	1060	400	1370	3,03	B	530
15	4,23	1,20	4,50	4,23	-	-	-	1400	400	1630	3,02	B	700
7+7	4,50	2,20	5,55	2,25	2,25	-	-	1415	620	1900	3,18	B	708
7+9	4,60	2,20	5,55	2,01	2,59	-	-	1420	620	1900	3,24	A	710
7+12	4,70	2,20	5,55	1,73	2,97	-	-	1420	620	1900	3,31	A	710
7+15	5,15	2,20	5,95	1,64	3,51	-	-	1700	620	2100	3,03	B	850
9+9	4,79	2,20	5,55	2,35	2,35	-	-	1480	620	1900	3,24	A	740
9+12	5,15	2,20	5,95	2,06	3,09	-	-	1700	620	2100	3,03	B	850
9+15	5,60	2,20	6,20	2,10	3,50	-	-	1850	620	2300	3,03	B	925
12+12	5,76	2,20	6,20	2,88	2,88	-	-	1910	620	2300	3,02	B	955
12+15	6,05	2,20	6,20	2,69	3,36	-	-	2010	620	2300	3,01	B	1005
15+15	6,10	2,20	6,20	3,05	3,05	-	-	2020	620	2300	3,02	B	1010
7+7+7	6,20	2,20	6,90	2,07	2,07	2,07	-	2020	620	2440	3,07	B	1010
7+7+9	6,30	2,20	6,90	1,92	1,92	2,46	-	2040	620	2440	3,09	B	1020
7+7+12	6,45	3,50	7,20	1,74	1,74	2,97	-	2060	900	2550	3,13	B	1030
7+7+15	6,45	3,50	7,20	1,56	1,56	3,33	-	2060	900	2550	3,13	B	1030
7+9+12	6,45	3,50	7,20	1,61	2,07	2,77	-	2060	900	2550	3,13	B	1030
7+9+15	6,47	3,50	7,30	1,46	1,88	3,13	-	2060	900	2580	3,14	B	1030
7+12+15	6,47	3,50	7,30	1,33	2,28	2,86	-	2060	900	2580	3,14	B	1030
7+9+9	6,45	3,50	7,20	1,81	2,32	2,32	-	2060	900	2550	3,13	B	1030
7+12+12	6,46	3,50	7,30	1,46	2,50	2,50	-	2060	900	2580	3,14	B	1030
7+15+15	6,49	3,50	7,40	1,23	2,63	2,63	-	2060	900	2650	3,15	B	1030
9+9+9	6,45	3,50	7,20	2,15	2,15	2,15	-	2060	900	2550	3,13	B	1030
9+9+12	6,47	3,50	7,30	1,94	1,94	2,59	-	2060	900	2580	3,14	B	1030
9+12+12	6,49	3,50	7,40	1,82	2,34	2,34	-	2060	900	2650	3,15	B	1030
9+12+15	6,49	3,50	7,40	1,62	2,16	2,71	-	2060	900	2650	3,15	B	1030
12+12+12	6,51	3,50	7,50	2,17	2,17	2,17	-	2060	900	2650	3,16	B	1030
9+15+15	6,60	3,50	7,50	1,52	2,54	2,54	-	2100	900	2650	3,14	B	1050
12+12+15	6,63	3,50	7,50	2,04	2,04	2,55	-	2110	900	2650	3,14	B	1055
12+15+15	6,66	3,50	7,50	1,90	2,38	2,38	-	2150	900	2650	3,10	B	1075

## 38VGM\_N/VYM\_N (Quadri Split)

Cooling mode (size 32)													
Indoor unit		Cooling capacity (kW)						Input power (W)			EER	Energy class	AEC
size	Total	Min	Max	IU #1	IU #2	IU #3	IU #4	Total	Min	Max	W/W		kW/h
7	2,40	1,10	3,21	2,47	-	-	-	740	400	1060	3,24	A	370
9	2,47	1,20	2,90	2,45	-	-	-	745	400	1100	3,32	A	373
12	3,21	1,20	3,80	3,21	-	-	-	1060	400	1370	3,03	B	530
15	4,23	1,20	4,50	4,23	-	-	-	1400	400	1630	3,02	B	700
7 + 7	4,50	2,20	5,55	2,25	2,25	-	-	1415	620	1900	3,18	B	708
7 + 9	4,60	2,20	5,55	2,01	2,59	-	-	1420	620	1900	3,24	A	710
7 + 12	4,70	2,20	5,55	1,73	2,97	-	-	1420	620	1900	3,31	A	710
7 + 15	5,15	2,20	5,95	1,64	3,51	-	-	1700	620	2100	3,03	B	850
9 + 9	4,79	2,20	5,55	2,35	2,35	-	-	1480	620	1900	3,24	A	740
9 + 12	5,15	2,20	5,95	2,06	3,09	-	-	1700	620	2100	3,03	B	850
9 + 15	5,60	2,20	6,20	2,10	3,50	-	-	1850	620	2300	3,03	B	925
12 + 12	5,76	2,20	6,20	2,88	2,88	-	-	1910	620	2300	3,02	B	955
12 + 15	6,05	2,20	6,20	2,69	3,36	-	-	2010	620	2300	3,01	B	1005
15 + 15	6,10	2,20	6,20	3,05	3,05	-	-	2020	620	2300	3,02	B	1010
7 + 7 + 7	6,20	2,20	6,90	2,07	2,07	2,07	-	2020	620	2440	3,07	B	1010
7 + 7 + 9	6,30	2,20	6,90	1,92	1,92	2,46	-	2040	620	2440	3,09	B	1020
7 + 7 + 12	6,45	3,50	7,20	1,74	1,74	2,97	-	2060	900	2550	3,13	B	1030
7 + 7 + 15	6,45	3,50	7,20	1,56	1,56	3,33	-	2060	900	2550	3,13	B	1030
7 + 9 + 12	6,45	3,50	7,20	1,61	2,07	2,77	-	2060	900	2550	3,13	B	1030
7 + 9 + 15	6,47	3,50	7,30	1,46	1,88	3,13	-	2060	900	2580	3,14	B	1030
7 + 12 + 15	6,47	3,50	7,30	1,33	2,28	2,86	-	2060	900	2580	3,14	B	1030
7 + 9 + 9	6,45	3,50	7,20	1,81	2,32	2,32	-	2060	900	2550	3,13	B	1030
7 + 12 + 12	6,46	3,50	7,30	1,46	2,50	2,50	-	2060	900	2580	3,14	B	1030
7 + 15 + 15	6,49	3,50	7,40	1,23	2,63	2,63	-	2060	900	2650	3,15	B	1030
9 + 9 + 9	6,45	3,50	7,20	2,15	2,15	2,15	-	2060	900	2550	3,13	B	1030
9 + 9 + 12	6,47	3,50	7,30	1,94	1,94	2,59	-	2060	900	2580	3,14	B	1030
9 + 12 + 12	6,49	3,50	7,40	1,82	2,34	2,34	-	2060	900	2650	3,15	B	1030
9 + 12 + 15	6,49	3,50	7,40	1,62	2,16	2,71	-	2060	900	2650	3,15	B	1030
12 + 12 + 12	6,51	3,50	7,50	2,17	2,17	2,17	-	2060	900	2650	3,16	B	1030
9 + 15 + 15	6,60	3,50	7,50	1,52	2,54	2,54	-	2100	900	2650	3,14	B	1050
12 + 12 + 15	6,63	3,50	7,50	2,04	2,04	2,55	-	2110	900	2650	3,14	B	1055
12 + 15 + 15	6,66	3,50	7,50	1,90	2,38	2,38	-	2150	900	2650	3,10	B	1075
7 + 7 + 7 + 7	7,10	4,20	7,90	1,77	1,77	1,78	1,78	2255	930	2700	3,15	B	1128
7 + 7 + 7 + 9	7,15	4,20	7,90	1,67	1,67	1,67	2,15	2255	930	2700	3,17	B	1128
7 + 7 + 7 + 12	7,20	4,20	7,90	1,53	1,53	1,53	2,61	2260	930	2750	3,19	B	1130
7 + 7 + 7 + 15	7,25	4,20	7,90	1,41	1,41	1,41	3,02	2265	930	2750	3,20	B	1133
7 + 9 + 9 + 9	7,25	4,20	7,90	1,49	1,92	1,92	1,92	2265	930	2750	3,20	B	1133
7 + 7 + 9 + 9	7,24	4,20	7,90	1,58	1,58	2,04	2,04	2265	930	2750	3,20	B	1133
7 + 7 + 12 + 12	7,30	4,20	8,00	1,35	1,35	2,30	2,30	2270	930	2800	3,22	A	1135
7 + 7 + 15 + 15	7,40	4,20	8,00	1,24	1,24	2,46	2,46	2300	930	2800	3,22	A	1150
7 + 7 + 9 + 12	7,30	4,20	7,90	1,35	1,35	1,73	2,87	2270	930	2750	3,22	A	1135
7 + 7 + 9 + 15	7,35	4,20	8,00	1,35	1,35	1,74	2,91	2270	930	2750	3,24	A	1135
7 + 7 + 12 + 15	7,35	4,20	8,05	1,26	1,26	2,15	2,68	2290	930	2800	3,21	A	1145
7 + 9 + 12 + 15	7,41	4,20	8,10	1,21	1,55	2,07	2,58	2310	930	2800	3,21	A	1155
7 + 9 + 15 + 15	7,50	4,20	8,20	1,13	1,47	2,45	2,45	2340	930	2800	3,21	A	1170
7 + 12 + 9 + 9	7,30	4,20	8,00	1,38	2,36	1,78	1,78	2270	930	2800	3,22	A	1135
7 + 15 + 9 + 9	7,35	4,20	8,00	1,29	2,76	1,65	1,65	2270	930	2800	3,24	A	1135
7 + 12 + 12 + 12	7,45	4,20	8,10	1,21	2,08	2,08	2,08	2340	930	2800	3,18	B	1170
7 + 12 + 12 + 15	7,50	4,20	8,20	1,52	1,96	1,96	3,26	2340	930	2800	3,21	A	1170
9 + 9 + 9 + 9	7,30	4,20	8,00	1,83	1,83	1,83	1,83	2270	930	2700	3,22	A	1135
9 + 9 + 9 + 15	7,40	4,20	8,05	1,59	1,59	1,59	2,63	2290	930	2700	3,23	A	1145
9 + 9 + 9 + 12	7,35	4,20	8,05	1,69	1,69	1,69	2,28	2290	930	2700	3,21	A	1145
9 + 9 + 12 + 12	7,41	4,20	8,10	1,48	1,48	2,22	2,22	2300	930	2750	3,22	A	1150
9 + 9 + 12 + 15	7,50	4,20	8,20	1,50	1,50	2,00	2,50	2320	930	2800	3,23	A	1160
9 + 12 + 12 + 12	7,50	4,20	8,20	1,43	2,03	2,03	2,03	2330	930	2800	3,22	A	1165
9 + 12 + 12 + 15	7,68	4,20	8,20	1,44	1,92	1,92	2,40	2370	930	2800	3,24	A	1185
12 + 12 + 12 + 12	7,65	4,20	8,30	1,91	1,91	1,91	1,91	2370	930	2850	3,23	A	1185
9 + 9 + 15 + 15	7,68	4,20	8,30	1,44	1,44	2,40	2,40	2370	930	2850	3,24	A	1185

## 38VGM\_N/VYM\_N (Dual Split)

Heating mode (size 14)												
Indoor unit		Heating capacity (kW)						Input power (W)			COP	Energy class
size	Total	Min	Max	IU #1	IU #2	IU #3	IU #4	Total	Min	Max	W/W	
7	2,44	0,70	3,20	2,44	-	-	-	710	160	1200	3,44	B
9	2,70	0,70	3,60	2,70	-	-	-	740	160	1250	3,65	A
12	2,90	0,70	4,00	2,90	-	-	-	780	160	1250	3,72	A
7 + 7	3,40	0,90	4,20	1,70	1,70	-	-	820	160	1420	4,15	A
7 + 9	3,46	0,90	4,20	1,51	1,95	-	-	830	160	1420	4,16	A
7 + 12	3,46	0,90	4,40	1,27	2,19	-	-	840	160	1500	4,12	A
9 + 9	3,46	0,90	4,40	1,73	1,73	-	-	860	160	1500	4,03	A
9 + 12	3,55	0,90	4,50	1,52	2,03	-	-	880	160	1500	4,03	A

Heating mode (size 18)												
Indoor unit		Heating capacity (kW)						Input power (W)			COP	Energy class
size	Total	Min	Max	IU #1	IU #2	IU #3	IU #4	Total	Min	Max	W/W	
7	3,12	0,70	4,20	3,12	-	-	-	1095	160	1470	2,85	D
9	3,64	0,70	4,20	3,64	-	-	-	1380	160	1470	2,64	E
12	4,18	0,70	4,50	4,18	-	-	-	1540	160	1600	2,71	E
15	4,25	0,70	4,50	4,25	-	-	-	1580	160	1600	2,69	E
7 + 7	5,20	0,90	6,10	2,60	2,60	-	-	1620	160	2100	3,21	C
7 + 9	5,30	0,90	6,10	2,32	2,98	-	-	1650	160	2100	3,21	C
7 + 12	5,40	0,90	6,20	1,99	3,41	-	-	1660	160	2300	3,25	C
7 + 15	5,50	0,90	6,20	1,75	3,75	-	-	1670	160	2300	3,29	C
9 + 9	5,60	0,90	6,20	2,80	2,80	-	-	1670	160	2300	3,35	C
9 + 12	5,65	0,90	6,20	3,39	2,26	-	-	1630	160	2300	3,47	B
12 + 12	5,70	0,90	6,20	2,85	2,85	-	-	1660	160	2300	3,43	B
9 + 15	5,75	0,90	6,20	2,16	3,59	-	-	1660	160	2300	3,46	B



## 38VGM\_N/VYM\_N (Tri Split)

Heating mode (size 28)												
Indoor unit		Heating capacity (kW)						Input power (W)			COP	Energy class
size	Total	Min	Max	IU #1	IU #2	IU #3	IU #4	Total	Min	Max	W/W	
7	3,35	1,10	3,50	3,35	-	-	-	1430	290	1500	2,34	G
9	3,40	1,10	4,00	3,40	-	-	-	1440	300	1550	2,36	G
12	4,40	1,10	5,00	4,40	-	-	-	1940	300	2000	2,27	G
15	4,70	1,10	5,40	4,70	-	-	-	2050	300	2100	2,29	G
7 + 7	6,15	1,60	8,60	3,08	3,08	-	-	2350	350	2950	2,62	E
7 + 9	6,30	1,60	8,60	2,76	3,54	-	-	2380	350	2950	2,65	E
7 + 12	6,55	1,60	8,80	2,41	4,14	-	-	2400	350	3000	2,73	E
7 + 15	6,85	1,60	8,80	2,18	4,67	-	-	2400	350	3050	2,85	D
9 + 9	6,55	1,60	9,00	3,28	3,28	-	-	2400	350	3000	2,73	E
9 + 12	6,85	1,70	9,00	4,11	2,74	-	-	2400	370	3050	2,85	D
9 + 15	6,90	1,70	9,20	2,59	4,31	-	-	2400	370	3000	2,88	D
12 + 12	7,00	1,70	9,20	3,50	3,50	-	-	2400	370	3000	2,92	D
12 + 15	7,30	1,70	9,20	3,24	4,06	-	-	2450	370	3000	2,98	D
15 + 15	7,50	1,70	9,20	3,75	3,75	-	-	2450	370	3000	3,06	D
7 + 7 + 7	7,80	2,40	9,20	2,60	2,60	2,60	-	2380	550	3000	3,28	C
7 + 7 + 9	7,90	2,40	9,20	2,40	2,40	3,10	-	2390	550	3000	3,31	C
7 + 7 + 12	8,05	2,40	9,40	2,17	2,17	3,71	-	2400	550	2800	3,35	C
7 + 7 + 15	8,05	2,40	9,40	1,94	1,94	4,17	-	2400	550	2800	3,35	C
7 + 9 + 12	8,05	2,40	9,40	2,01	2,59	3,45	-	2410	550	2800	3,34	C
7 + 9 + 15	8,15	2,40	9,50	1,84	2,37	3,94	-	2420	550	2800	3,37	C
7 + 12 + 15	8,15	2,40	9,50	1,68	2,88	3,59	-	2420	550	2800	3,37	C
7 + 9 + 9	8,05	2,40	9,40	2,25	2,90	2,90	-	2430	550	2800	3,31	C
7 + 12 + 12	8,15	2,40	9,50	1,85	3,15	3,15	-	2430	550	2800	3,35	C
7 + 15 + 15	8,15	2,40	9,50	1,55	3,30	3,30	-	2380	550	2800	3,42	B
9 + 9 + 9	8,05	2,80	9,40	2,68	2,68	2,68	-	2360	600	2800	3,41	B
9 + 9 + 12	8,15	2,80	9,50	2,45	2,45	3,26	-	2330	600	2800	3,50	B
9 + 12 + 12	8,25	2,80	9,60	2,31	2,97	2,97	-	2360	600	2840	3,50	B
9 + 12 + 15	8,25	2,80	9,60	2,06	2,75	3,44	-	2360	600	2840	3,50	B
12 + 12 + 12	8,40	2,80	9,70	2,80	2,80	2,80	-	2400	600	2900	3,50	B
9 + 15 + 15	8,45	2,80	9,40	1,95	3,25	3,25	-	2450	600	2800	3,45	B
12 + 12 + 15	8,50	2,80	9,40	2,62	2,62	3,26	-	2470	600	2800	3,44	B
12 + 15 + 15	8,55	2,80	9,70	2,45	3,05	3,05	-	2500	600	2800	3,42	B

## 38VGM\_N/VYM\_N (Quadri Split)

Heating mode (size 32)												
Indoor unit		Heating capacity (kW)						Input power (W)			COP	Energy class
size	Total	Min	Max	IU #1	IU #2	IU #3	IU #4	Total	Min	Max	W/W	
7	3,35	1,10	3,50	3,35	-	-	-	1430	290	1500	2,34	G
9	3,40	1,10	4,00	3,40	-	-	-	1440	300	1550	2,36	G
12	4,40	1,10	5,00	4,40	-	-	-	1940	300	2000	2,27	G
15	4,70	1,10	5,40	4,70	-	-	-	2050	300	2100	2,29	G
7 + 7	6,15	1,60	8,60	3,08	3,08	-	-	2350	350	2950	2,62	E
7 + 9	6,30	1,60	8,60	2,76	3,54	-	-	2380	350	2950	2,65	E
7 + 12	6,55	1,60	8,80	2,41	4,14	-	-	2400	350	3000	2,73	E
7 + 15	6,85	1,60	8,80	2,18	4,67	-	-	2400	350	3050	2,85	D
9 + 9	6,55	1,60	9,00	3,28	3,28	-	-	2400	350	3000	2,73	E
9 + 12	6,85	1,70	9,00	4,11	2,74	-	-	2400	370	3050	2,85	D
9 + 15	6,90	1,70	9,20	2,59	4,31	-	-	2400	370	3000	2,88	D
12 + 12	7,00	1,70	9,20	3,50	3,50	-	-	2400	370	3000	2,92	D
12 + 15	7,30	1,70	9,20	3,24	4,06	-	-	2450	370	3000	2,98	D
15 + 15	7,50	1,70	9,20	3,75	3,75	-	-	2450	370	3000	3,06	D
7 + 7 + 7	7,80	2,40	9,20	2,60	2,60	2,60	-	2380	550	3000	3,28	C
7 + 7 + 9	7,90	2,40	9,20	2,40	2,40	3,10	-	2390	550	3000	3,31	C
7 + 7 + 12	8,05	2,40	9,40	2,17	2,17	3,71	-	2400	550	2800	3,35	C
7 + 7 + 15	8,05	2,40	9,40	1,94	1,94	4,17	-	2400	550	2800	3,35	C
7 + 9 + 12	8,05	2,40	9,40	2,01	2,59	3,45	-	2410	550	2800	3,34	C
7 + 9 + 15	8,15	2,40	9,50	1,84	2,37	3,94	-	2420	550	2800	3,37	C
7 + 12 + 15	8,15	2,40	9,50	1,68	2,88	3,59	-	2420	550	2800	3,37	C
7 + 9 + 9	8,05	2,40	9,40	2,25	2,90	2,90	-	2430	550	2800	3,31	C
7 + 12 + 12	8,15	2,40	9,50	1,85	3,15	3,15	-	2430	550	2800	3,35	C
7 + 15 + 15	8,15	2,40	9,50	1,55	3,30	3,30	-	2380	550	2800	3,42	B
9 + 9 + 9	8,05	2,80	9,40	2,68	2,68	2,68	-	2360	600	2800	3,41	B
9 + 9 + 12	8,15	2,80	9,50	2,45	2,45	3,26	-	2330	600	2800	3,50	B
9 + 12 + 12	8,25	2,80	9,60	2,31	2,97	2,97	-	2360	600	2840	3,50	B
9 + 12 + 15	8,25	2,80	9,60	2,06	2,75	3,44	-	2360	600	2840	3,50	B
12 + 12 + 12	8,40	2,80	9,70	2,80	2,80	2,80	-	2400	600	2900	3,50	B
9 + 15 + 15	8,45	2,80	9,40	1,95	3,25	3,25	-	2450	600	2800	3,45	B
12 + 12 + 15	8,50	2,80	9,40	2,62	2,62	3,26	-	2470	600	2800	3,44	B
12 + 15 + 15	8,55	2,80	9,70	2,45	3,05	3,05	-	2500	600	2800	3,42	B
7 + 7 + 7 + 7	8,20	3,10	9,50	2,05	2,05	2,05	2,05	2240	700	2900	3,66	A
7 + 7 + 7 + 9	8,22	3,10	9,50	1,92	1,92	1,92	2,46	2240	700	2900	3,67	A
7 + 7 + 7 + 12	8,25	3,10	9,50	1,75	1,75	1,75	3,00	2250	700	2900	3,67	A
7 + 7 + 7 + 15	8,28	3,10	9,50	1,61	1,61	1,61	3,45	2260	700	2900	3,66	A
7 + 9 + 9 + 9	8,35	3,10	9,80	1,72	2,21	2,21	2,21	2280	700	2900	3,66	A
7 + 7 + 9 + 9	8,30	3,10	9,80	1,82	1,82	2,33	2,33	2280	700	2900	3,64	A
7 + 7 + 12 + 12	8,46	3,10	9,80	1,56	1,56	2,67	2,67	2280	700	2900	3,71	A
7 + 7 + 15 + 15	8,50	3,10	9,80	1,42	1,42	2,83	2,83	2280	700	2900	3,73	A
7 + 7 + 9 + 12	8,42	3,10	9,80	1,68	1,68	2,17	2,89	2280	700	2900	3,69	A
7 + 7 + 9 + 15	8,45	3,10	9,80	1,56	1,56	2,00	3,33	2280	700	2900	3,71	A
7 + 7 + 12 + 15	8,48	3,10	9,80	1,45	1,45	2,48	3,10	2280	700	2900	3,72	A
7 + 9 + 12 + 15	8,50	3,10	9,80	1,38	1,78	2,37	2,97	2290	700	2900	3,71	A
7 + 9 + 15 + 15	8,60	3,10	10,10	1,31	1,69	2,80	2,80	2320	700	2920	3,71	A
7 + 12 + 9 + 9	8,45	3,10	9,80	1,59	2,74	2,06	2,06	2280	700	2900	3,71	A
7 + 15 + 9 + 9	8,50	3,10	9,90	1,49	3,19	1,91	1,91	2320	700	2900	3,66	A
7 + 12 + 12 + 12	8,55	3,10	10,00	1,38	2,39	2,39	2,39	2340	700	2910	3,65	A
7 + 12 + 12 + 15	8,65	3,10	10,10	1,32	2,26	2,26	2,81	2350	700	2920	3,68	A
9 + 9 + 9 + 9	8,45	3,10	9,80	2,11	2,11	2,11	2,11	2280	700	2900	3,71	A
9 + 9 + 9 + 15	8,50	3,10	9,90	1,82	1,82	1,82	3,04	2300	700	2900	3,70	A
9 + 9 + 9 + 12	8,50	3,10	9,90	1,96	1,96	1,96	2,64	2300	700	2900	3,70	A
9 + 9 + 12 + 12	8,55	3,10	10,00	1,71	1,71	2,57	2,57	2310	700	2910	3,70	A
9 + 9 + 12 + 15	8,60	3,10	10,10	1,72	1,72	2,29	2,87	2310	700	2920	3,72	A
9 + 12 + 12 + 12	8,60	3,10	10,10	1,63	2,32	2,32	2,32	2310	700	2920	3,72	A
9 + 12 + 12 + 15	8,70	3,10	10,20	1,62	2,18	2,18	2,72	2310	700	2930	3,77	A
12 + 12 + 12 + 12	8,70	3,10	10,20	2,18	2,18	2,18	2,18	2320	700	2930	3,75	A
9 + 9 + 15 + 15	8,60	3,10	10,10	1,61	1,61	2,69	2,69	2320	700	2920	3,71	A